

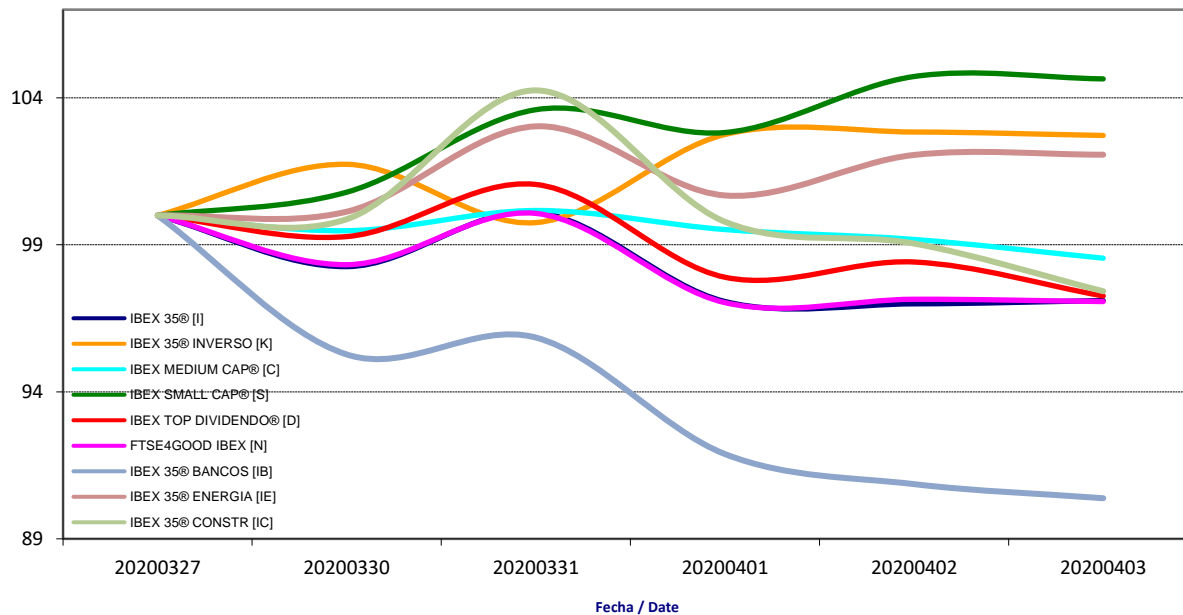
Boletín semanal Índices IBEX® / Weekly bulletin IBEX® Indexes.

30/03/2020 - 03/04/2020

30/03/2020 al 03/04/2020	Cierre/Closing	Máximo/Max*	Mínimo/Min*	Rentabilidad / Yield	Rent. anual/ Annual Yield
IBEX 35® [I]	6.581,6	6.785,4	6.574,1	-2,90%	-31,08%
IBEX 35® CON DIV [J]	19.251,9	19.841,7	19.229,9	-2,81%	-30,72%
IBEX 35® INVERSO [K]	3.326,2	3.330,0	3.230,2	2,72%	35,69%
IBEX MEDIUM CAP® [C]	9.560,5	9.717,9	9.560,5	-1,45%	-32,11%
IBEX SMALL CAP® [S]	5.183,7	5.187,7	4.992,8	4,65%	-23,87%
IBEX TOP DIVIDENDO® [D]	1.799,1	1.869,3	1.799,1	-2,74%	-37,39%
FTSE4GOOD IBEX [N]	6.714,0	6.921,4	6.711,4	-2,93%	-31,43%
IBEX 35® BANCOS [IB]	282,8	299,9	282,8	-9,62%	-45,35%
IBEX 35® ENERGIA [IE]	1.111,2	1.121,7	1.090,1	2,07%	-17,80%
IBEX 35® CONSTR [IC]	1.080,8	1.156,6	1.080,8	-2,58%	-31,81%

* sobre cierres diarios

Evolución Semanal Índices / Indices Weekly Evolution



Ranking Semanal Valores IBEX 35® / IBEX35® Stocks Weekly Ranking:

Ranking subidas / Top performing stocks		
Cod./Sym.	Valor/Company	Rentabilidad/Yield
ENC	ENCE	14,44%
REP	REPSOL	12,33%
ACS	ACS CONST.	5,26%
CLNX	CELLNEX	3,76%
ACX	ACERINOX	3,08%

Ranking bajadas / Bottom performing stocks		
Cod./Sym.	Valor/Company	Rentabilidad/Yield
IDR	INDRA "A"	-13,66%
SAB	B. SABADELL	-12,00%
BBVA	BBVA	-11,48%
SAN	SANTANDER	-9,32%
FER	FERROVIAL	-8,58%