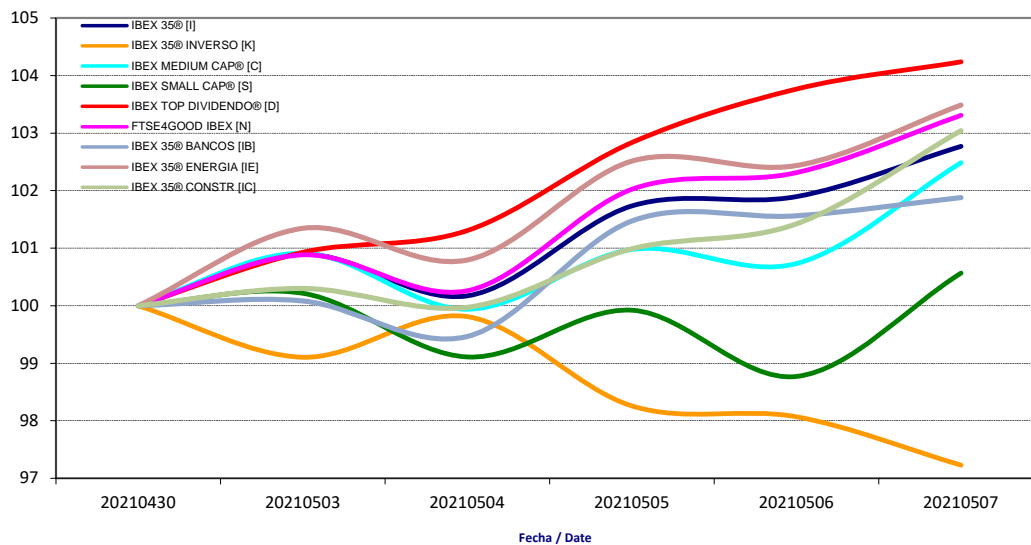


Boletín semanal Índices IBEX® / Weekly bulletin IBEX® Indexes.
03/05/2021 - 07/05/2021

03/05/2021 al 07/05/2021	Cierre/Closing	Máximo/Max*	Mínimo/Min*	Rentabilidad / Yield	Rent. anual/ Annual Yield
IBEX 35® [I]	9.059,2	9.059,2	8.830,4	2,77%	12,21%
IBEX 35® CON DIV [J]	27.410,8	27.410,8	26.710,7	2,80%	12,98%
IBEX 35® INVERSO [K]	2.185,9	2.243,9	2.185,9	-2,77%	-12,35%
IBEX MEDIUM CAP® [C]	14.080,2	14.080,2	13.730,8	2,48%	10,73%
IBEX SMALL CAP® [S]	8.581,9	8.581,9	8.428,6	0,57%	5,97%
IBEX TOP DIVIDENDO® [D]	2.507,3	2.507,3	2.427,7	4,24%	15,33%
FTSE4GOOD IBEX [N]	9.562,6	9.562,6	9.280,5	3,31%	13,69%
IBEX 35® BANCOS [IB]	476,5	476,5	465,2	1,88%	26,70%
IBEX 35® ENERGIA [IE]	1.355,6	1.355,6	1.320,3	3,49%	4,65%
IBEX 35® CONSTR [IC]	1.550,6	1.550,6	1.504,4	3,04%	9,94%

* sobre cierres diarios

Evolución Semanal Índices / Indices Weekly Evolution



Ranking Semanal Valores IBEX 35® / IBEX35® Stocks Weekly Ranking:

Ranking subidas / Top performing stocks		
Cod./Sym.	Valor/Company	Rentabilidad/Yield
SAB	B. SABADELL	15,97%
FDR	FLUIDRA	11,76%
MTS	ARCEL.MITTAL	11,62%
REP	REPSOL	8,69%
CIE	CIE AUTOMOT.	6,48%

Ranking bajadas / Bottom performing stocks		
Cod./Sym.	Valor/Company	Rentabilidad/Yield
PHM	PHARMA MAR	-10,36%
SGRE	SIEMENS GAM.	-7,97%
SLR	SOLARIA	-4,08%
ANA	ACCIONA	-3,52%
IDR	INDRA "A"	-3,52%